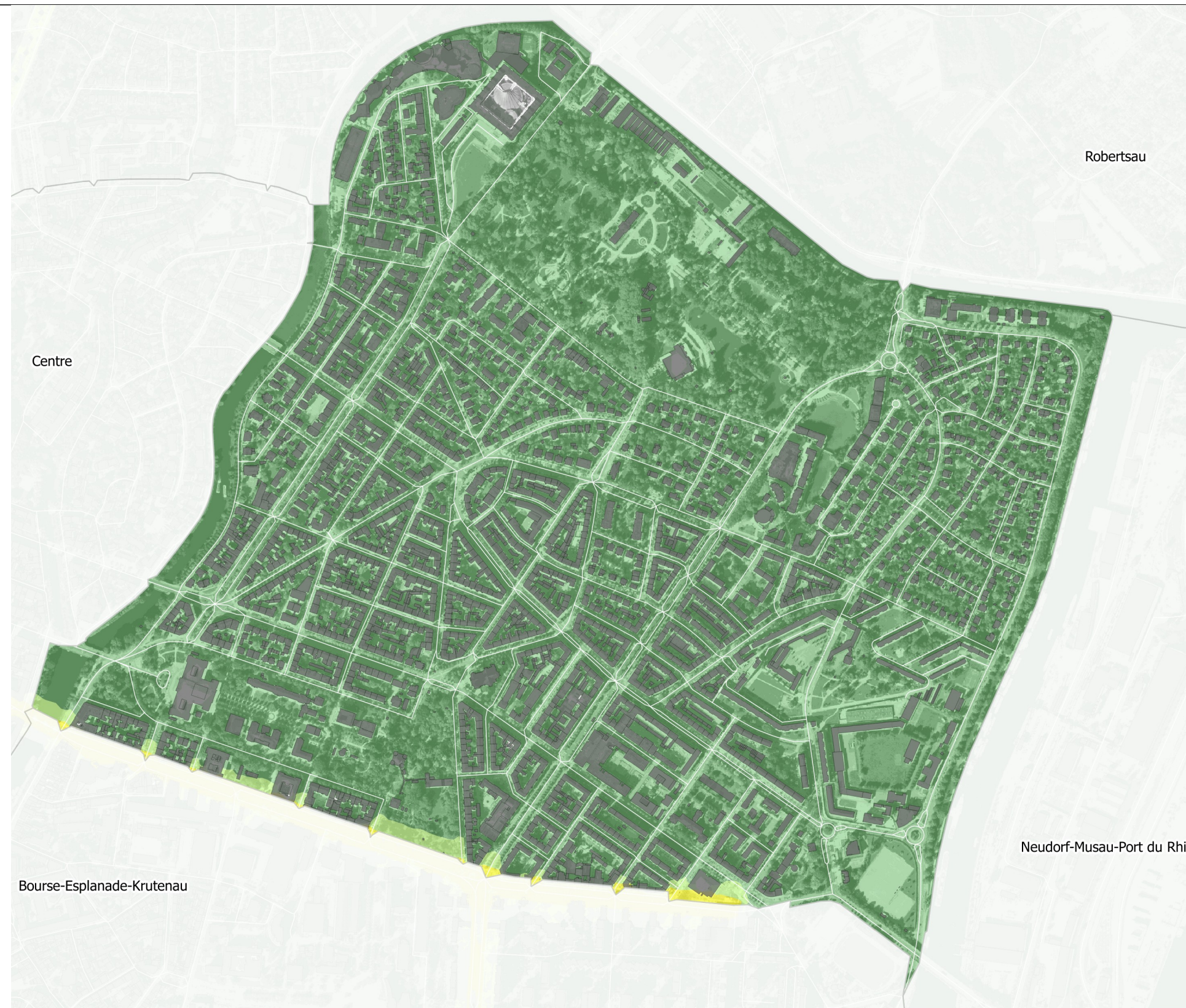
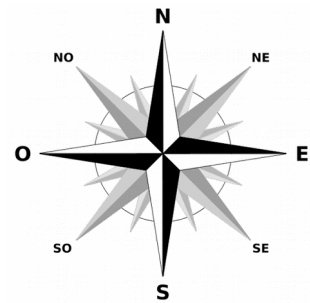


# Bruit ferroviaire Commune de Strasbourg Quartier Conseil des XV

Carte de type A localisant les zones exposées au bruit,  
à l'aide de courbes isophones en Ln (Level night)  
par pas de 5, de 50 dB(A) à supérieur à 75 dB(A)



Légende couleur	
<span style="background-color: #00FF00; border: 1px solid black; display: inline-block; width: 15px; height: 10px;"></span>	< 50 dB(A)
<span style="background-color: #90EE90; border: 1px solid black; display: inline-block; width: 15px; height: 10px;"></span>	> 50 à 55 dB(A)
<span style="background-color: #FFFF00; border: 1px solid black; display: inline-block; width: 15px; height: 10px;"></span>	> 55 à 60 dB(A)
<span style="background-color: #FFA500; border: 1px solid black; display: inline-block; width: 15px; height: 10px;"></span>	> 60 à 65 dB(A)
<span style="background-color: #FF0000; border: 1px solid black; display: inline-block; width: 15px; height: 10px;"></span>	> 65 à 70 dB(A)
<span style="background-color: #FF00FF; border: 1px solid black; display: inline-block; width: 15px; height: 10px;"></span>	> 70 à 75 dB(A)
<span style="background-color: #800080; border: 1px solid black; display: inline-block; width: 15px; height: 10px;"></span>	> 75 dB(A)